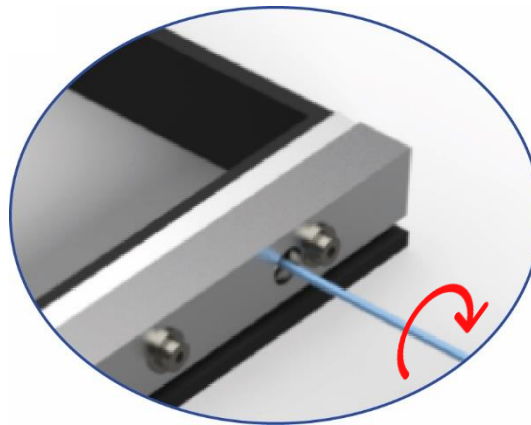
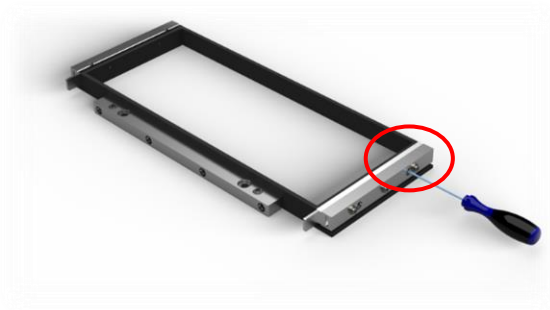


## Gallus Screeny<sup>®</sup> & Fast Tension Frame FTF

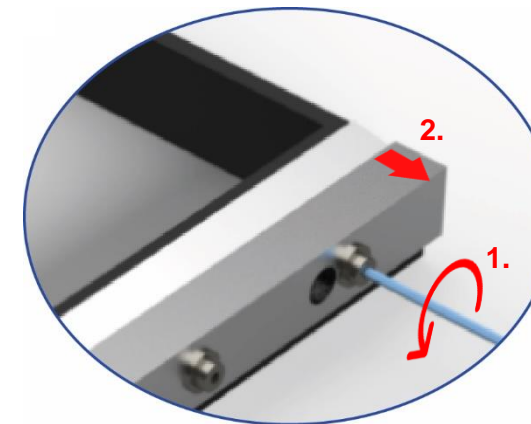
# USER MANUAL



Picture 1



Picture 2



## 1 PREPARATION OF THE FRAME

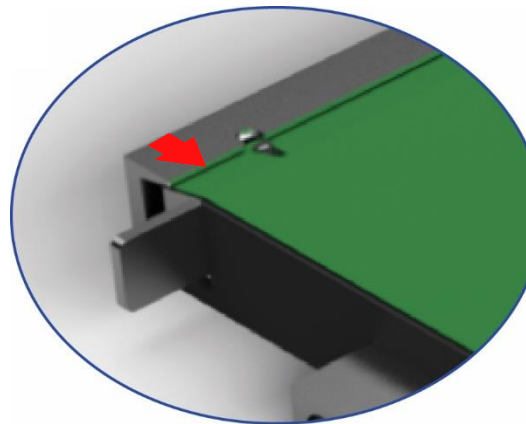
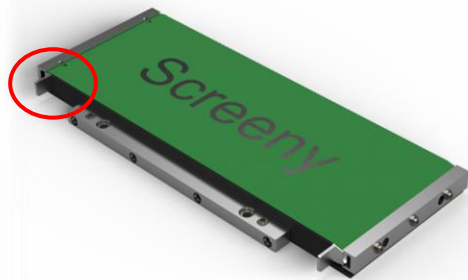
### 1.1 Spring screws

Gently rotate the spring screws clockwise until the screw stop (**pic. 1**). That will squeeze the springs. Do it with both spring screws. Alternate between the screws to avoid uneven travel of the aluminium bar.

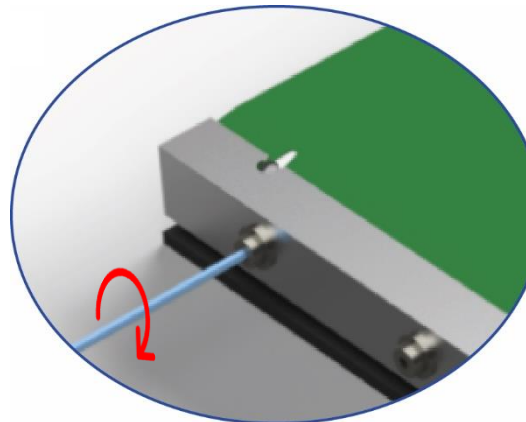
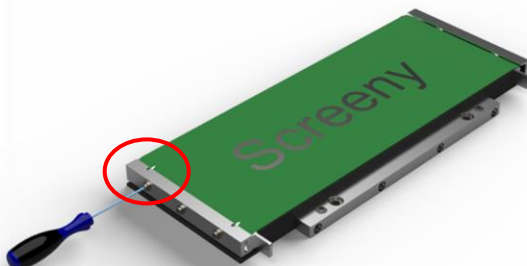
### 1.2 Clamp screws

Turn the clamp screws anti-clockwise to loosen the clamp (**pic. 2**). The screws don't need to come off completely. Push the clamp bar outward. Do it on both sides of the frame.

Picture 3



Picture 4



## 2 ASSEMBLY OF SCREENY AND FRAME

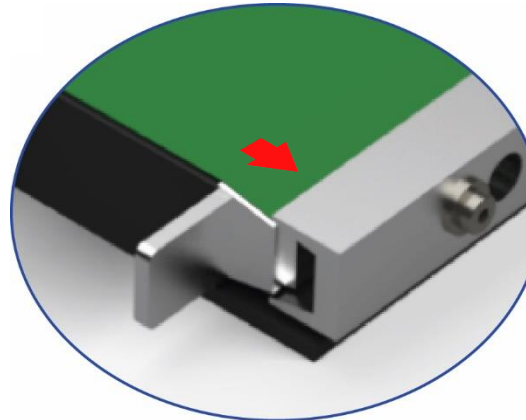
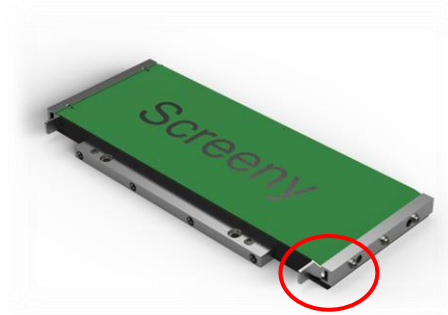
### 2.1 Positioning on pin-side

Tuck the Screeny under the clamp on the pin side first. (**pic. 3**). Pull the Screeny gently against the pins so that there will be no gap between Screeny and pins; push back the clamp against the Screeny as shown in pic. 3.

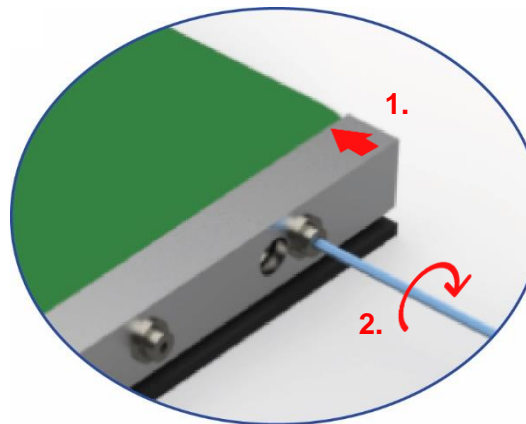
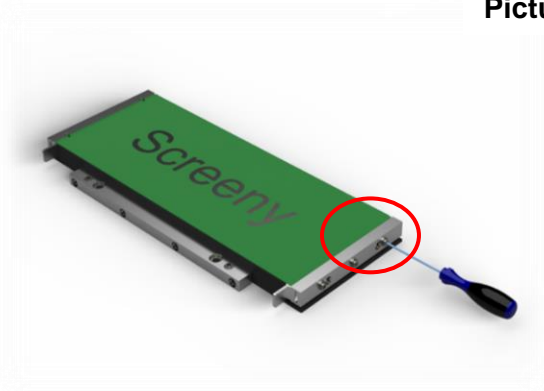
### 2.2 Tighten screws on pin side

Screw down the screws clockwise to fasten the clamp (**pic. 4**). Drill the screws down until the screw stop. Start with the middle screw and alternate between the screws.

Picture 5



Picture 6



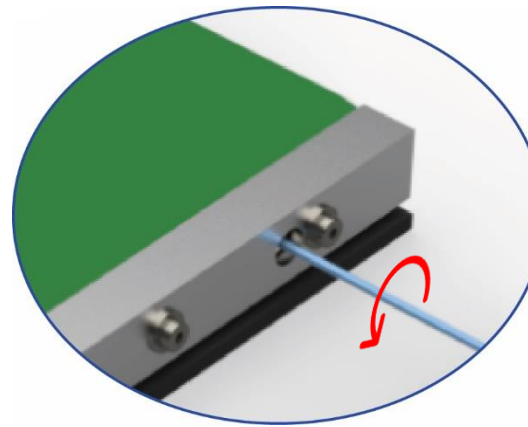
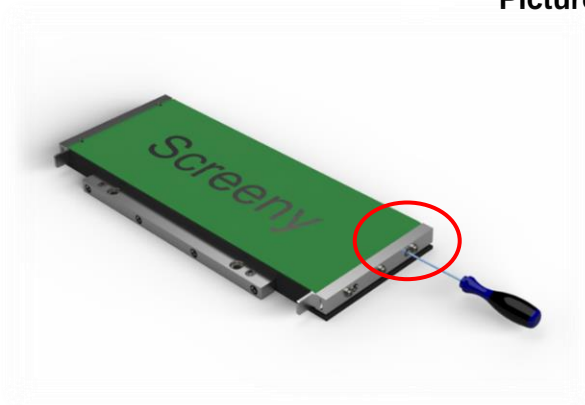
## 2.3 Positioning on spring side

On the opposite side of the frame (spring-side), position the Screeny underneath the clamp (**pic 5**).

## 2.4 Clamping on spring side

Push the clamp back against the Screeny. Tighten the clamp screws by turning them clockwise (**pic. 6**). Drill the screws down until the screw stop. Start with the middle screw and alternate between the screws.

Picture 7



Picture 8



## 3 STRETCHING

### 3.1 Spring screws

Drill the spring screws anti-clockwise to stretch the Screeny (**pic 7**). Alternate the screws to avoid uneven tension which could result in jamming of the screws and/or the aluminium bar. The screw heads should be almost flush with the clamp.

## 4 TAPING

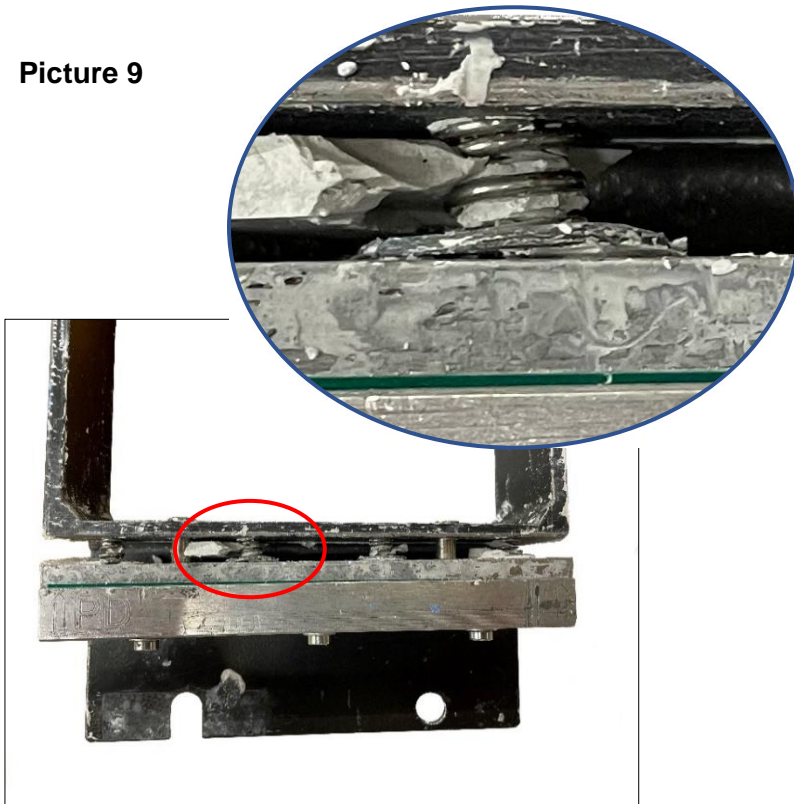
4.1 Taping outside and inside of the frame (**pic 8**) will avoid ink leakage during the printing process.





To clean, never use any abrasive/sharp product or device like a metal spatula, steel wool or similar!

Picture 9



## 5 CARE INSTRUCTIONS

### 5.1 Insulation

The frame has an insulation coating. Scratching or damaging the insulation can lead to short circuits in the frame.

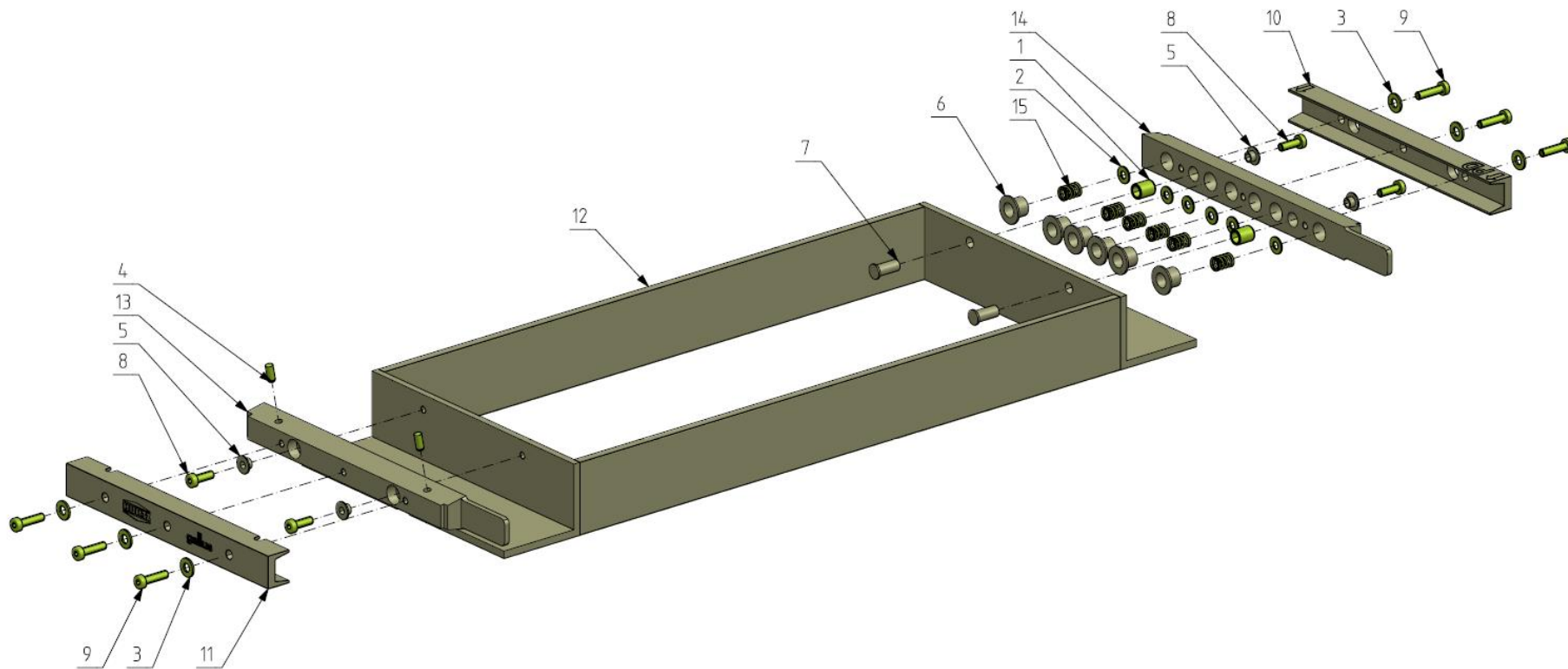
### 5.2 Cleaning

Remove excess paint with a plastic spatula. We suggest to immerse the frame in hot water at around 60°C for a couple of minutes. Residual ink should be removed with a polyester brush or another non-abrasive tool.

### 5.3 Small parts

Be attentive to avoid ink to penetrate and dry-up underneath or around the clamps, bars, springs and screws (**pic. 9**). If it does, clean in hot water as described under 5.2.

## Spare Parts



## Spare Parts List

Position	Description	Art. - Nr.	Min. order Qty.
1	Plastic plain bearing	ZSM-0608-10	50
2	Plastic washer	12/6x1	50
3	Washer	5/10x1	50
4	Cylindrical pin	d4m6x10	50
5	Plastic plain bearing	ZFM-0405-04	50
6	Plastic plain bearing	ZFM-0810-09	50
7	Sleeve nut	d6mm	50
8	Cheesehead screw	M4x12	50
9	Cheesehead screw	M4x16	50
10	Clamp U shape	n.a. depends on frame size	1
11	Clamp U shape	n.a. depends on frame size	1
12	Insulated frame body	n.a. depends on frame size	1
13	Clamp bar	n.a. depends on frame size	1
14	Clamp bar	n.a. depends on frame size	1
15	Spring	VD-173A-01	50





**PLEASE VISIT OUR PLAYLIST**

