

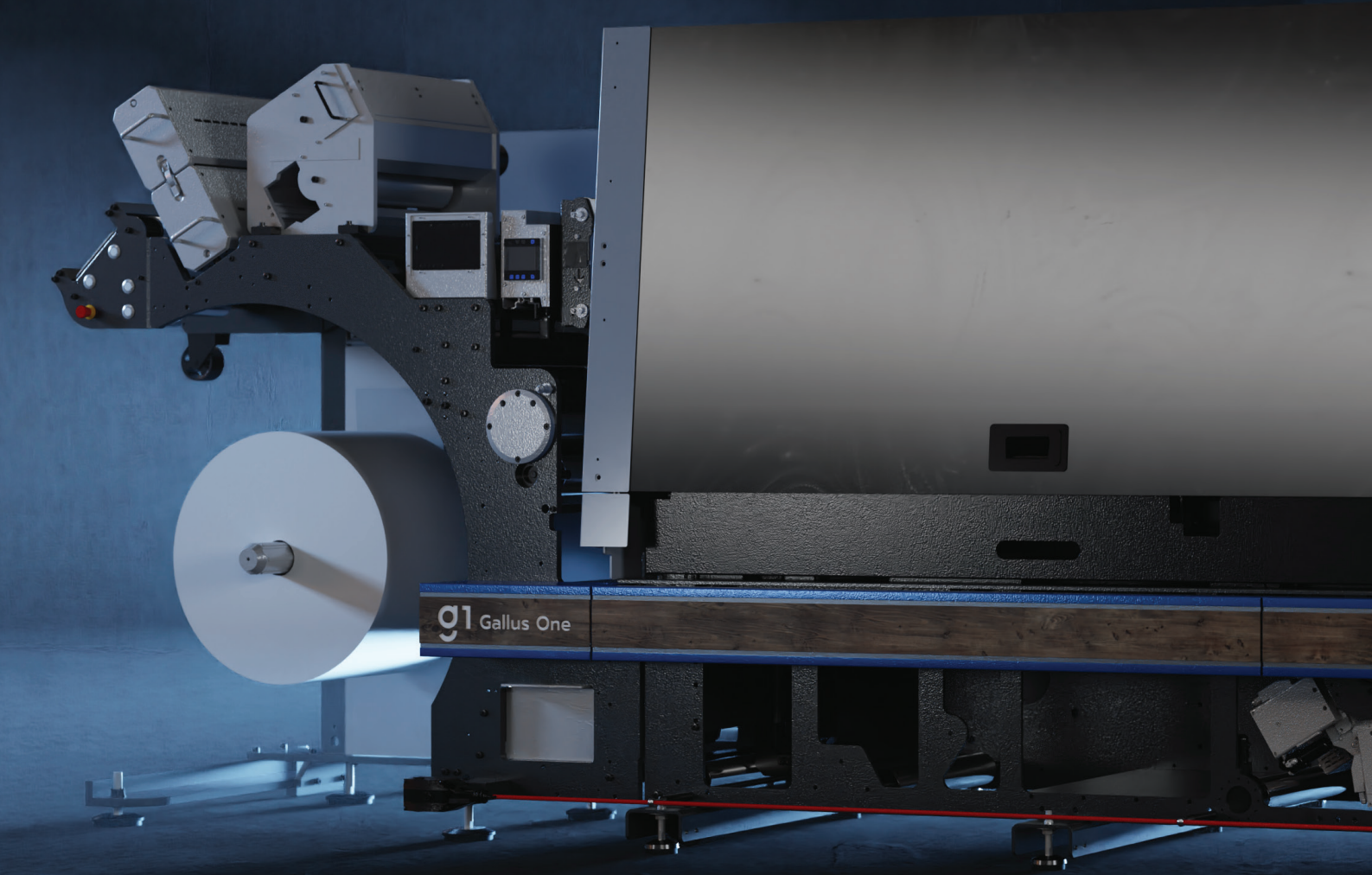
Technical information.

Technical data	
Printing speed	max. 70 m/min.
Productivity max. printing area	1428 m²/h
Printing width	max. 340 mm
Splice control	automatic splicing with printing table drop
Teknek web cleaner	one-way
Active web cleaner (suction system)	contact-free
Corona	front side
Antistatic system	contact-free
Substrates	monofilm, paper and compound materials (30–300 µm)
CO2 neutral	yes
Digital printer unit	
Printing method	UV Piezo DoD – Inkjet
Print resolution	1200 × 1200 dpi native at 2 pl drop size, optical resolution approx. 2400 × 2400 dpi
Colours	CMYK (Cyan/Magenta/Yellow/Black)
White (optional)	85 % opacity at 70 m/min.
Pinning	UV-LED air-cooled
Automatic cleaning system	contact-free; additional ultrasonic cleaning system for intensive cleaning
Vision system	view of print layout on the HMI
Digital Print Control	jet defect recognition and compensation/density unevenness recognition and compensation
Substrate qualification	automatic inline qualification (100% system-supported)
Digital Register Automatic	for all colours
Industrial Variable data (iVDP)	e.g. barcodes and QR codes, alphanumeric text
Insetting	custom-fit imprinting of pre-printed substrates
Workflow	
Installation	on-site or cloud-based
Digital Front End (DFE)	server/client architecture inc. 3 x Prinect cockpits
Server	hardware or virtualised
Pre- and post-calculation	ink consumption
Connections	
Voltage	380-415 V / 50 Hz
Connection power	3P+PE; Base machine 50A+GEW drying unit 28A + DPU 32A USA, CAN, MEX: transformer is required to connect Base Machine 50A and DPU 24A; GEW drying unit & cooling unit are connected directly to the customer's power grid
Compressed air	6 bar, oil and water free
Exhaust air	1100 m³/h (exhaust temperature max. 50°C/ozone output during operation)
Compliance	CE, GS (UL on request)
Network connections	Remote Support – Secomea for remote support, Prinect, GEW support
Cooling system	Air for UV lamp heads, air for pinning
Water	Water for electronics and web (chill roller)
Room temperature	20–25°C or 68–77°F
Humidity (rel.)	40–60%
Air pressure (location)	700–1060 mbar or 10.5–15.37 lb/sq. in
Footprint Dimensions	
Length	6332 mm/250 in
Width	1760 mm/70 in, with cabinet: 3351 mm/132 in
Height	1857 mm/74 in, with exhaust air duct: 2951 mm/117 in
Workspace Dimensions	
Infeed	1500 mm/59 in
Delivery	1500 mm/59 in
Front	1500 mm/59 in
Back	1000 mm/39 in
Floor	
Evenness	Flatness of ±2 cm over a length of 10 m
Floor load	Load carrying capacity of 1,600 kg/m²–2.2757 psi

All technical data, descriptions, and illustrations are without guarantee, not binding, and subject to change without notice.

Gallus Ferd Rüesch AG.
Harzbüchelstrasse 34
9016 St. Gallen
Switzerland
Phone +41 71 242 86 86
info@gallus-group.com
gallus-group.com

Version January 2023



g1 Gallus One

Driving digital label transformation

Removing the TCO Barrier. Gallus One.

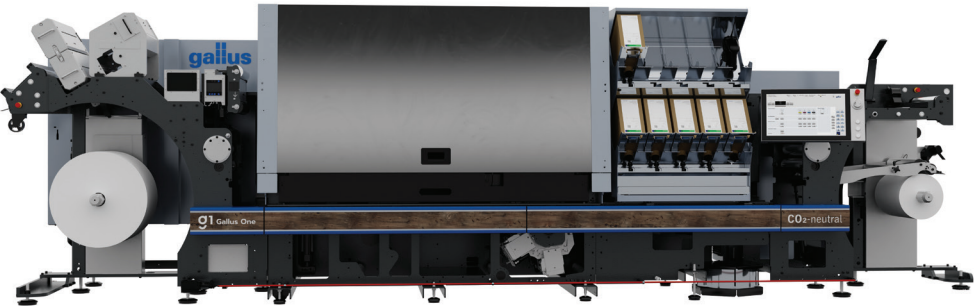
Utilizing one hundred years of label expertise and sophisticated engineering, Gallus One offers a complete digital label solution, including all the software and hardware necessary to produce high quality, profitable digital labels.

The Gallus One has been specifically designed to remove the Total Cost of Ownership (TCO) barrier for the adoption of reel-to-reel digital labels with the highest level of automation and cloud-based technologies. In doing so, it provides brands, for the first time, with access to cost effective and sustainable, high quality digital labels.

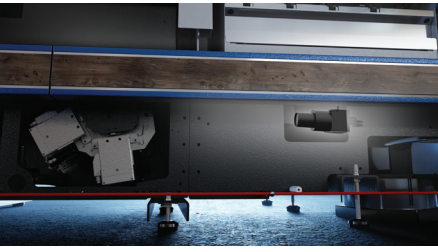
Over the last few years, cloud technologies have positively impacted many industries around the world, accelerating productivity and driving sustainable and successful futures. With cloud capabilities in-built within Gallus One, you can not only enjoy remote set-up, but transparent performance monitoring and standardization across your press portfolio and manufacturing sites.

Offering all the familiar benefits of a Labelmaster, Gallus One is a complete solution – not just a standalone print engine. Within the new Gallus One ecosystem, users have state of the art inkjet technology, a new Gallus One ink set, sophisticated workflow software and a new predictive press monitoring service to ensure minimum press downtime. All of these elements work in harmony, enabling an increase in press efficiency and productivity.

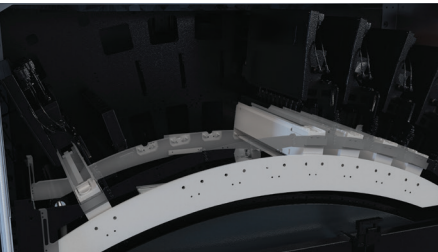
➔ gallus-one.com



Human Machine Interface (HMI) is designed to summarize important information at a glance. For quality assurance, the print results can be checked live, via web video, or while the press is running.



Vision System ensures supreme print quality at all speeds and on a wide range of substrate with live visual checks. The system automatically compensates missing nozzles and density variations.



Ultrasonic Cleaning System minimizes downtime and improves productivity with consistent cleaning process for improved print quality and minimizing the need for manual cleaning, increasing press availability.

A complete solution. Gallus One ecosystem.

The Gallus One is based not only on latest cutting-edge technologies, but also on the proven platform and components of the Gallus Labelmaster Series – with hundreds of units in the field – as well as key elements from the market leading Gallus Labelfire 340, 1200 dpi printing press.

Increased workflow efficiency

With Gallus One, the press and all its key systems have been designed to operate seamlessly together. With Prinect®, you can ensure maximum press efficiency and productivity. It is also compatible with all other third-party workflow systems, so no need to change solutions depending on your existing set-up.

- Best in Class Color Management to create ISO profiles
- Color Center: Streamlined, efficient and automated quality assurance. Transparent documentation for ultimate production reliability
- Calculate ink usage offline and in advance, for precise order processing and better business planning – also remotely via VPN

High performance ink

The high performance Gallus One ink, developed by Heidelberg®, is designed to deliver vibrant colors and increased stability and reliability - delivered quickly from a global organization with facilities in USA, Hong Kong and Japan.

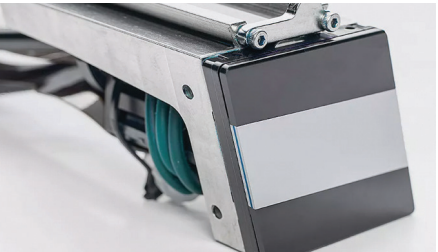
Predictive System Management

Identifying potential problems before they occur, is one of the Gallus One's most important features – further safeguarding our market leading productivity. Utilizing cloud capabilities, the press communicates performance status as well as maintenance issues to the Gallus HelpDesk, which then ensures a prompt response as necessary.

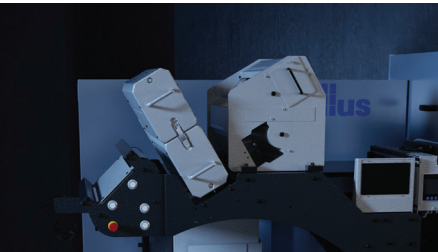
- Reliable and continuous operation
- Less downtime and stoppages
- Scheduled maintenance
- Strict compliance with EU Data Protection Regulation, no personal data or order content is shared

Highly automated inkjet technology

New Gallus One employs highly automated inkjet technology, that ensures precise ink application with high process stability. This enables the delivery of market leading print quality and reliability, all at high speeds, offering the maximum control over all process steps.



Printheads, which are unique specifically to the Gallus One, are firmly attached to the machine – significantly increasing print quality.



Automatic Splice Detection on the Gallus One automatically detect splices, letting them pass all print bars without loss of register and speed. This results in minimized waste and increased uptime.



Improved Ink Handling features a newly designed ink management system that streamlines ink replacement, which is easily accessible from the operator's side allowing ink replacement without contamination.

Entry level model for packaging production.

Colors	Speed	Native print resolution	Print width	Productivity
CMYK + White	70 m/min	1200x1200 dpi	340 mm	1428 m²/h



Elevate your business with Gallus. Get in touch with us.

Together with its Gallus brand, HEIDELBERG offers digital and conventional solutions for label printers in a growing market.

If you are interested in the **Gallus One** or would like to learn more about what we can offer, feel free to contact us. We are just an e-mail or phone call away.

Reach us by email

➔ info@heidelberg.com

or use our contact form at

➔ gallus-one.com

Please find the phone numbers of your local sales organization here:

➔ heidelberg.com/contact

