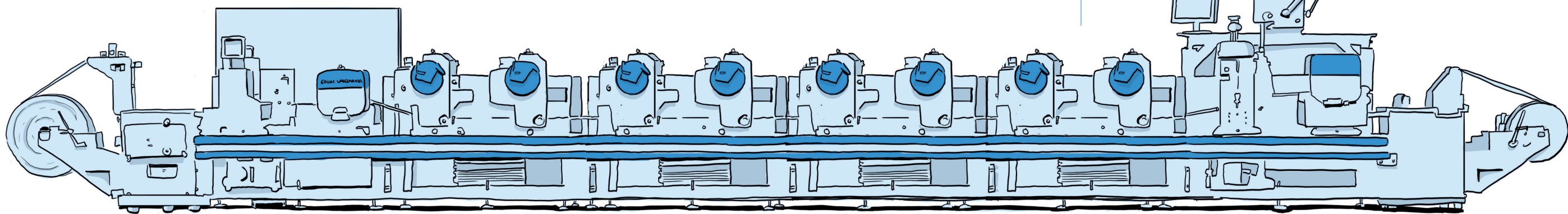
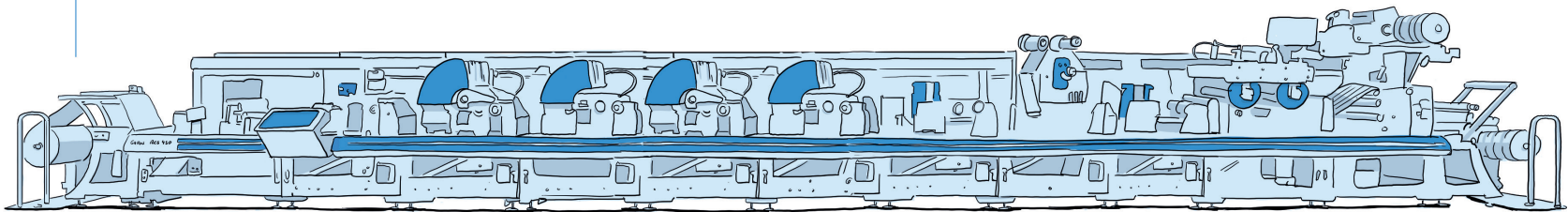


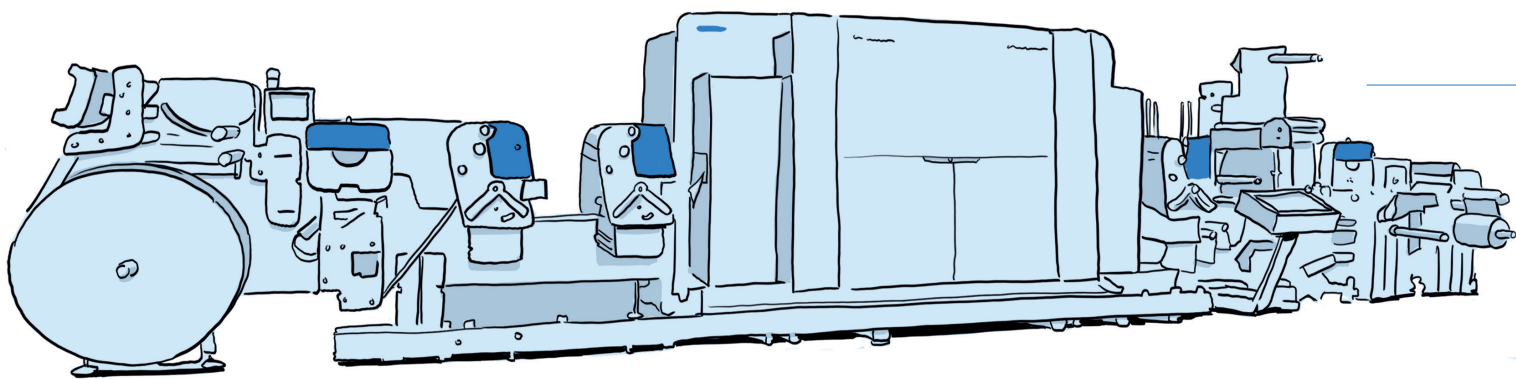
1 Gallus Labelmaster



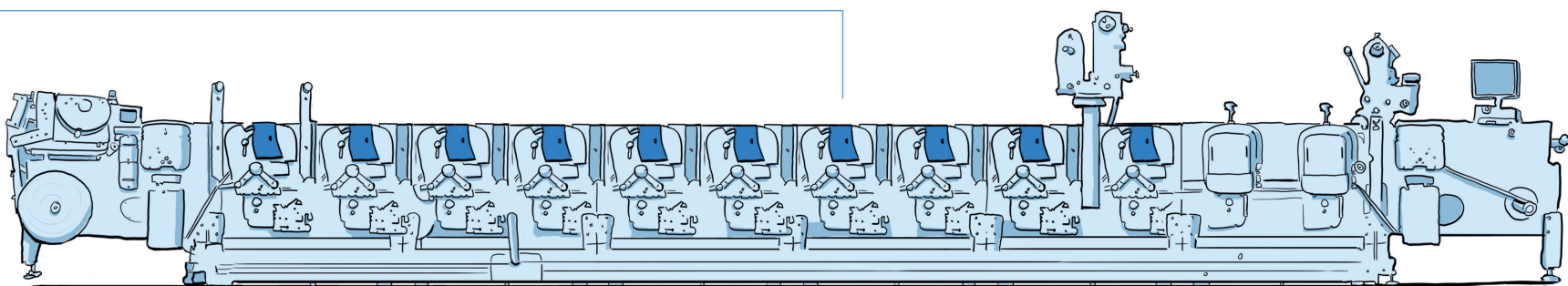
Gallus RCS 430 2



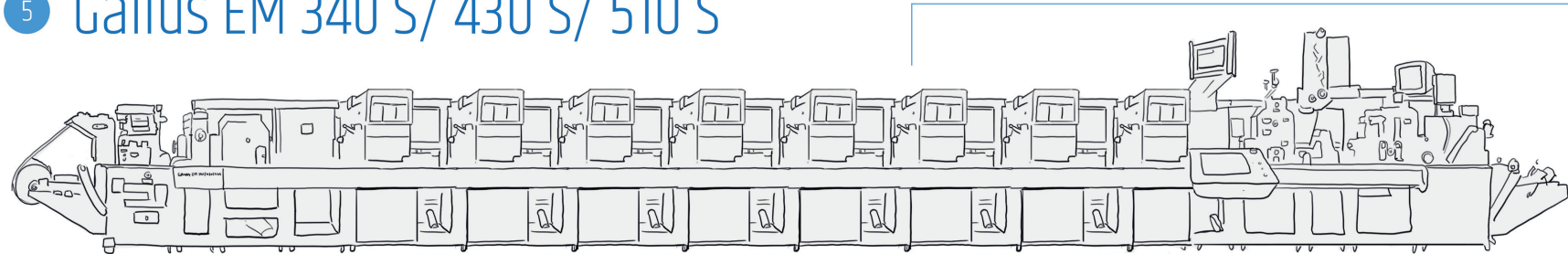
3 Gallus Labelfire 340



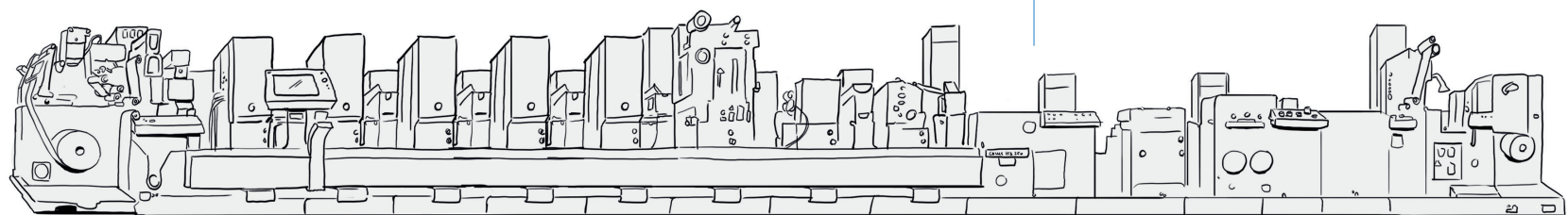
Gallus ECS 340 4



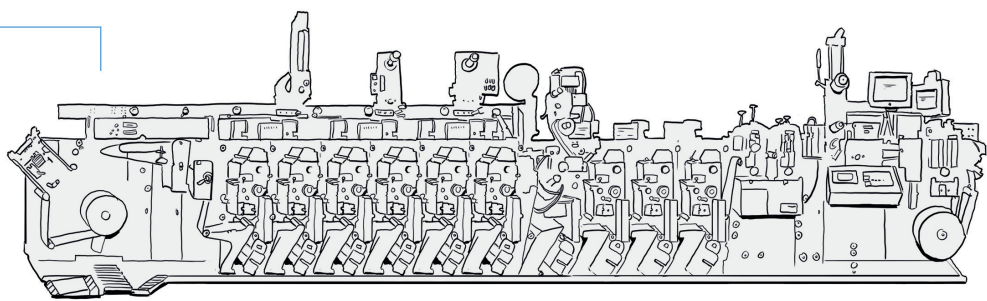
5 Gallus EM 340 S/ 430 S/ 510 S



Gallus TCS 250 6



Gallus EM 280 7



Unique Selling Proposition



Speed / Productivity



Flexibility



Quality



Efficiency



Profitability



Simplicity

Printing Substrates

PSA
(Paper, PE, PP)



Multilayer
foil



Monomaterial



Aluminium



Lightweight
cardboard

Printing Technologies

F

Flexo

G

Gravure

E

Emboss

O

Offset

HF

Hotfoil

DC

Die Cutting

D

Digital

CF

Coldfoil

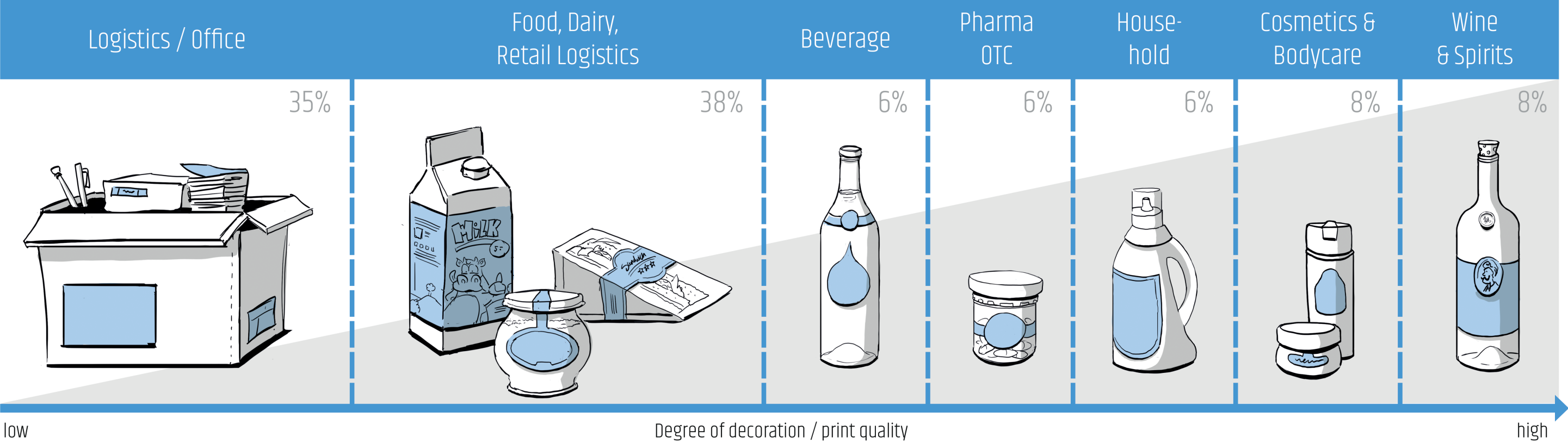
S

Screen

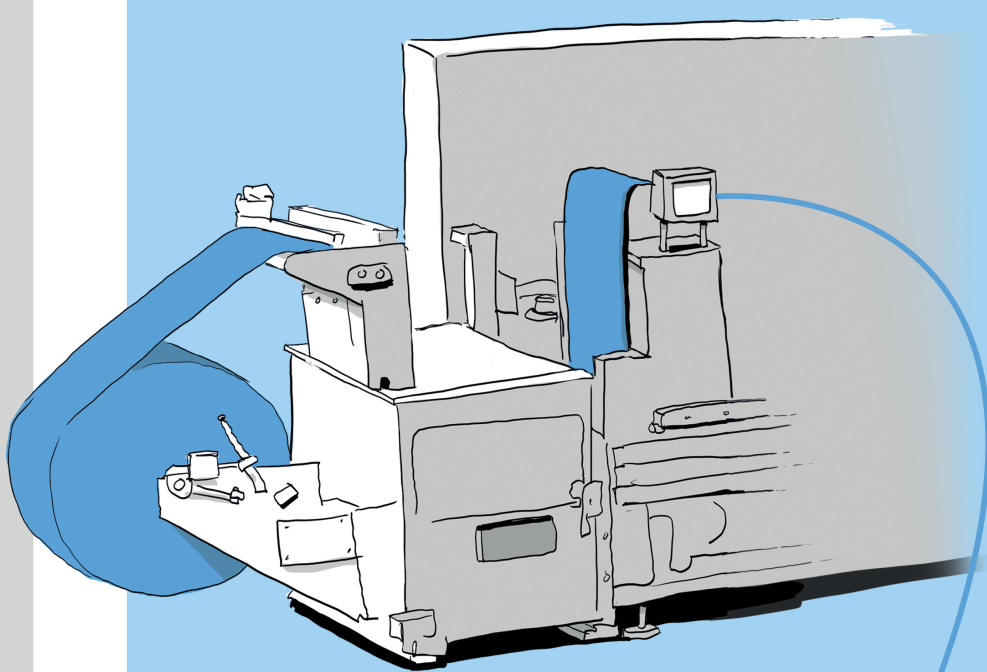
La

Lamination

Market Segments



Printing Technologies



Flexo

F

Straightforward application and excellent process reliability make flexographic printing the most widely used process in narrow-web label printing.

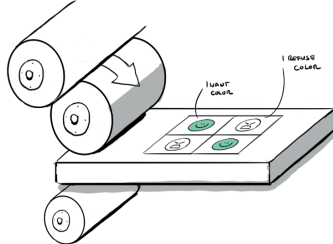


- strong and shiny colors
- fast and easy printing process
- very wide range of printing substrate

Offset

O

This printing process is particularly popular when top-quality halftone printing and colour fidelity are required.

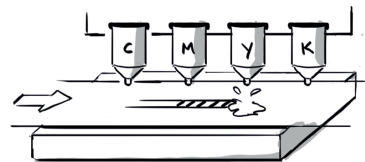


- very fine elements possible
- structured substrates possible
- complex process, lot of waste

Digital Inkjet

D

The digital DoD inkjet method is a perfect addition for high-quality flexographic, offset and screen printing applications and is ideal for short runs of labels or individualized labels.

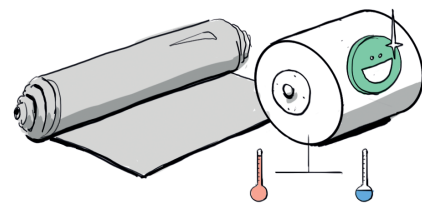


- ideal for very short jobs
- very flexible
- slow machine speeds

Hotfoil & Coldfoil Stamping

HF CF

Foil stamping is the application of metallic or pigmented foil on to a solid surface by application of a heated die onto foil, making it permanently adhere to the surface below leaving the design of the dye.

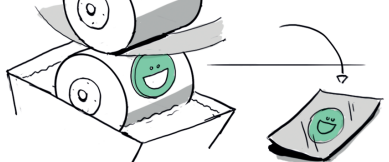


- metallic effect is possible

Gravure

G

In gravure printing, the image is engraved onto a cylinder because, like offset printing and flexography, it uses a rotary printing press.



- metallic effect and strong colors on very high speeds possible

Screen

S

Rotary screen printing is integrated into Gallus machines. Screen printing equipment can work equally well in combination with letterpress printing, flexographic printing, offset printing and hot foil embossing with a variety of processing functions.

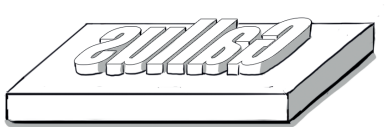


- very thick ink layers possible...
- ...but limited speed

Letterpress

Le

Letterpress printing is a technique of relief printing using a printing press, a process by which many copies are produced by repeated direct impression of an inked, raised surface against sheets or a continuous roll of paper.

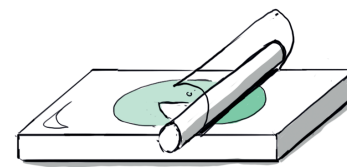


- time is almost over

Lamination

La

Laminates, or composite materials as they are also known, are used in applications with both functional and decorative requirements.

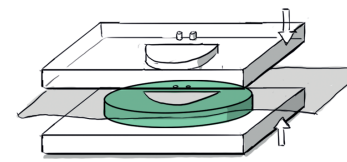


- protective and decorative
- high material costs

Embossing

E

Embossing and debossing are the processes of creating either raised or recessed relief images and designs in paper and other materials.

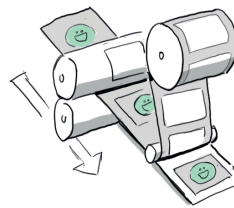


- eye-catching appearance

Die Cutting

DC

Die cutting is the process of using a die to shear webs of low-strength materials. Die cutting can be done on either flatbed or rotary presses.



- unlimited shape possibilities

Applications

